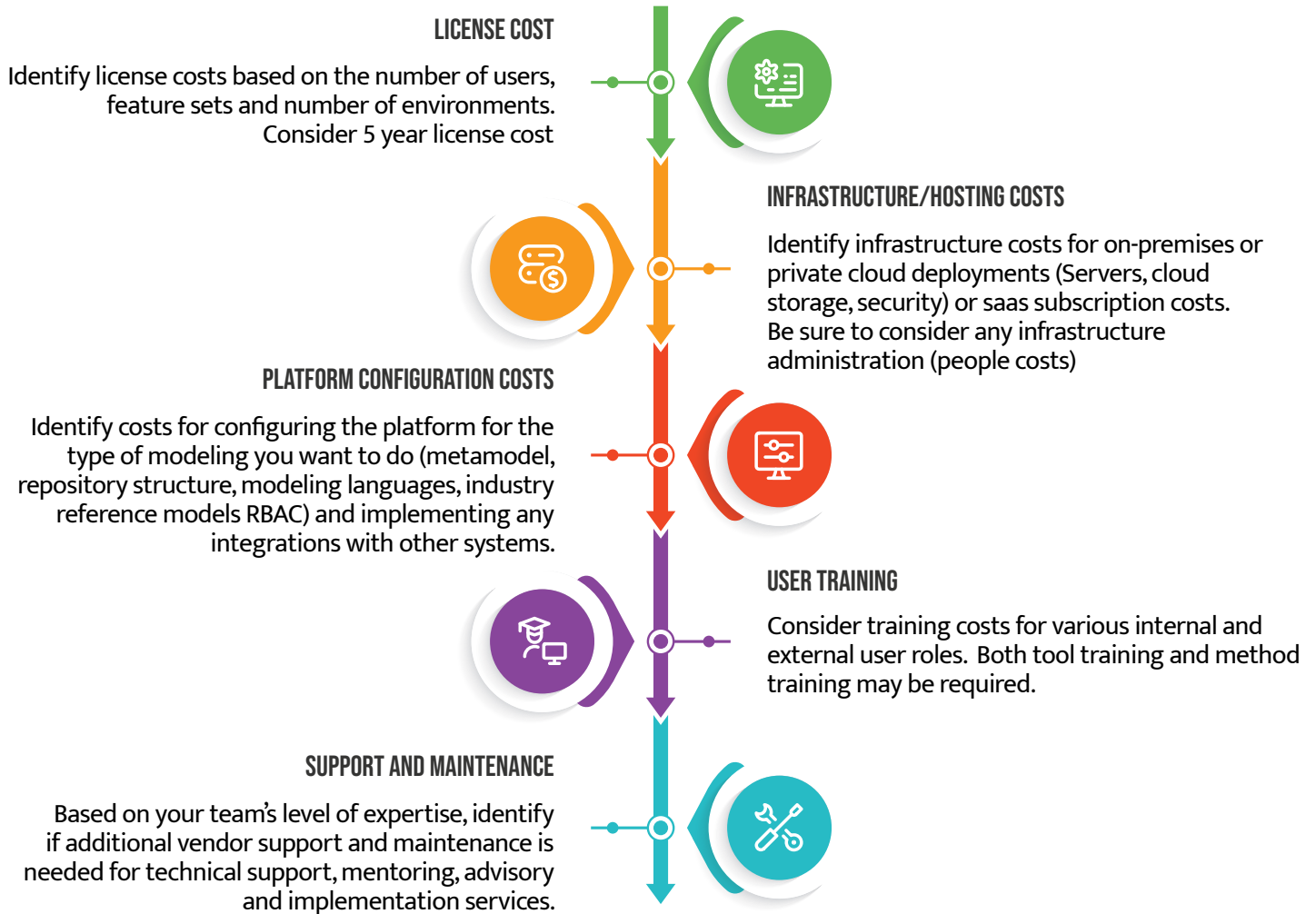


Architecture Platform Costing Worksheet

Implementing an Architecture platform is more than acquiring software. Value to your organization comes from using the platform for a specific business purpose. This costing guide provides an outline of the activities needed to realize value from your architecture platform investment and a worksheet for comparing the costs of different platform alternatives.



	Option 1:	Option 2:
Software		
Infrastructure / Hosting		
Configuration		
User Training		
Support And Maintenance		
Total Platform Cost Over __ Yrs		
Time To Implement (Mo)		